

WAX MUSEUM CONDOS  
917 CONTI STREET  
NEW ORLEANS, LA.

THESE PLANS AND SPECIFICATIONS HAVE BEEN PREPARED BY ME OR UNDER MY CLOSE PERSONAL SUPERVISION AND TO THE BEST OF MY KNOWLEDGE AND BELIEF THEY COMPLY WITH ALL CITY, STATE AND FEDERAL REQUIREMENTS, AND I AM NOT PROVIDING CONTRACT ADMINISTRATION.

CERTIFIED CORRECT

THIS DRAWING IS CONFIDENTIAL AND NOT BE LOANED, REPRODUCED, COPIED, EITHER WHOLLY OR IN PART, OR MADE PUBLIC IN ANY MANNER WITHOUT THE WRITTEN CONSENT OF HBSA II ARCHITECTS. A PROFESSIONAL L.L.C. ALL RIGHTS OF DESIGN OR INVENTION ARE RESERVED AND WILL REMAIN THE SOLE PROPERTY OF HBSA II ARCHITECTS A PROFESSIONAL L.L.C.

REVISION HISTORY				
NO.	DATE	DESCRIPTION	BY	CHKD.
1	06/20/16	SCHEMATIC DESIGN		
2	07/14/16	DESIGN DEVELOPMENT		
3	08/26/16	FOUNDATION PERMIT SET		
4	09/16/16	PROGRESS SET		
5	09/27/16	PERMIT SET		

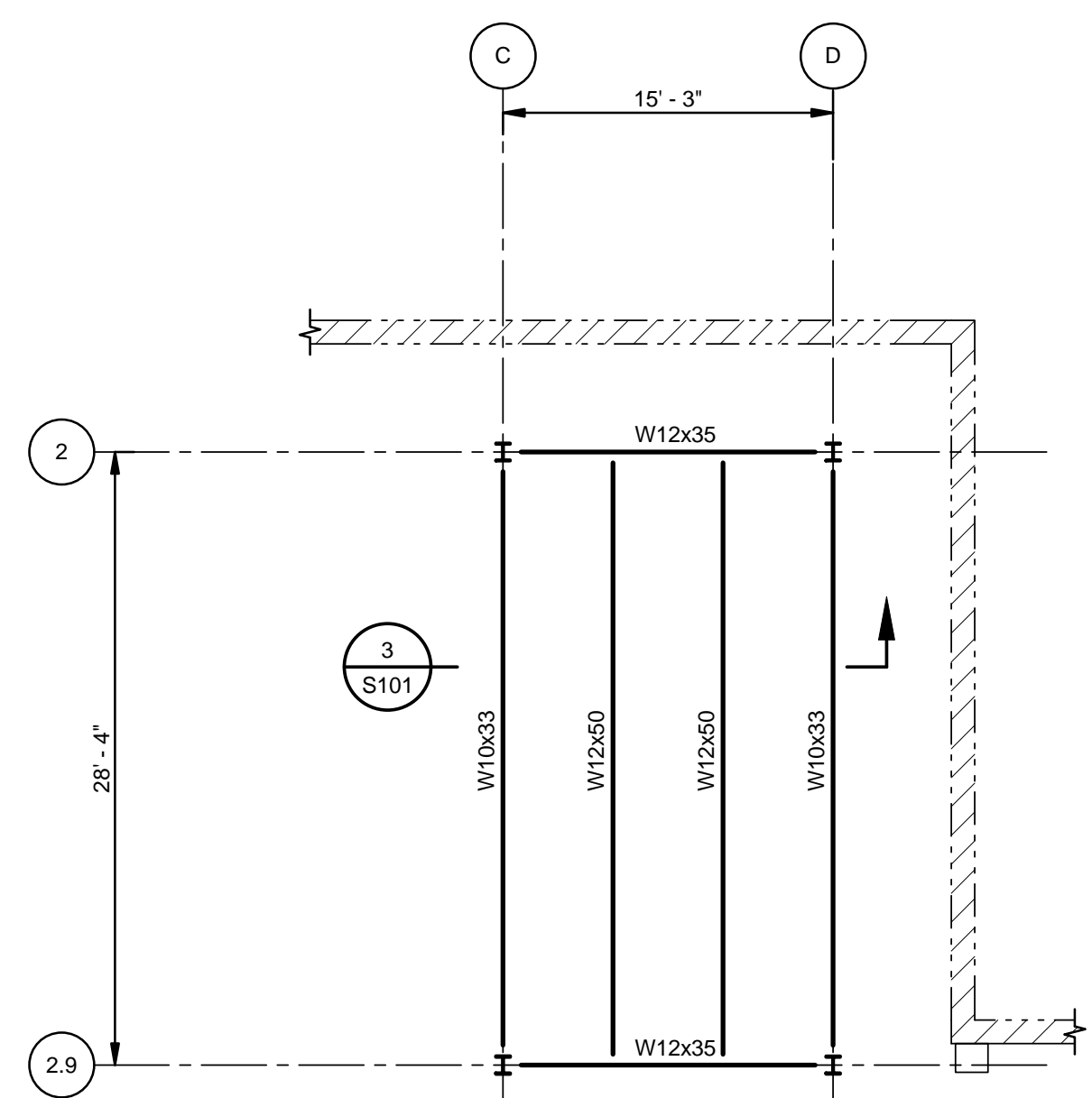
FOUNDATION AND FIRST FLOOR FRAMING PLAN

PROJECT#: 1435  
PHASE: DD  
DRAFTER: HSB  
CHECKER: HSB  
SCALE: AS NOTED  
ISSUED: 08-26-16  
SHEET#:

**S101**

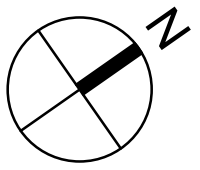


PROGRESS PRINT  
12/05/16



PLAN NOTES: UNLESS NOTED OTHERWISE:  
1. BOTTOM OF STEEL EL. 107'-0".  
2. PROVIDE GW 1 1/4"x3/16" GALVANIZED METAL GRATING BY McNICHOLS OR APPROVED EQUAL.

MECHANICAL MEZZANINE  
FRAMING PLAN  
S101 1/8" = 1'-0"



ASSUMED WIDTH OF EXIST. FOOTING

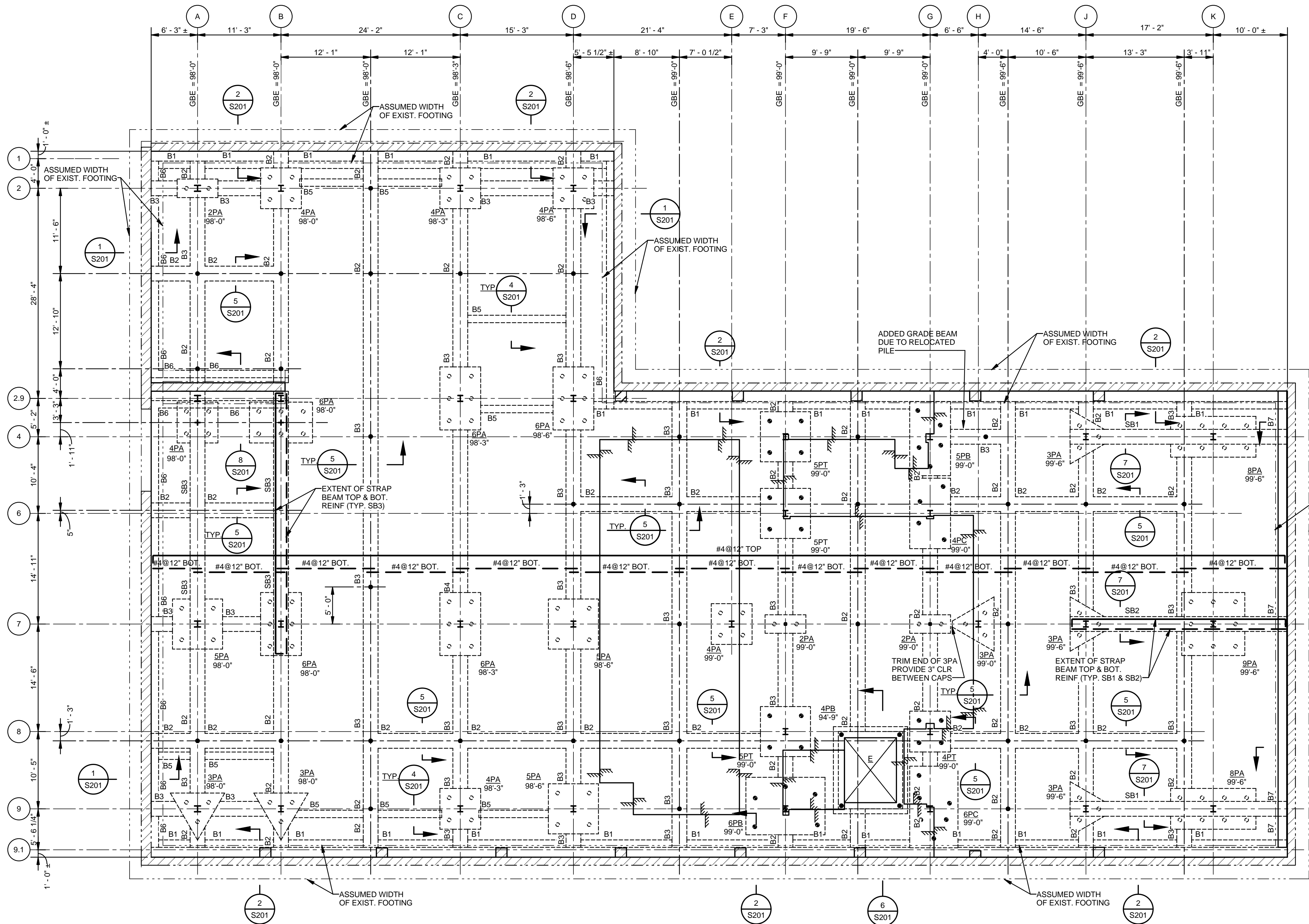
3 S201

EL. 107'-0"  
BOTTOM OF STEEL  
BEAM, SEE  
PLAN - TYP.  
PROVIDE A GALVANIZED  
CLAMP AT EACH CORNER  
OF EACH GRATING PANEL.  
SHOW DETAIL ON GRATING  
SHOP DRAWINGS.

SECTION  
S101 1" = 1'-0"

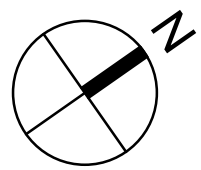
GRATING,  
SEE PLAN

2 1/2" MIN. BEARING  
EA. END - TYP.

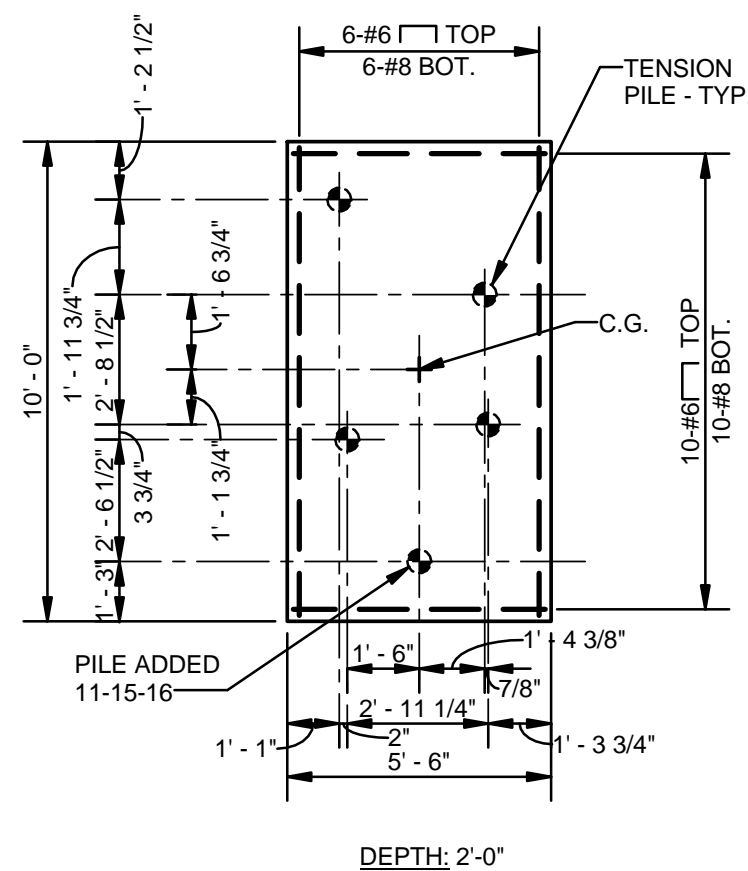


PLAN NOTES: UNLESS NOTED OTHERWISE:  
1. TOP OF SLAB EL. VARIES, SEE ARCH. FOR ALL ELEVATIONS AND SLOPES. EL. 100'-0" = 3.75'.  
2. 5" CONCRETE SLAB THROUGHOUT. SEE PLAN FOR MAIN REINFORCING. PROVIDE #3@12" O.C. TEMPERATURE REINFORCING ON TOP OF AND PERPENDICULAR TO MAIN BOTTOM REINFORCING. REFER TO SECTIONS, DETAILS, SCHEDULES, ETC. FOR ADDITIONAL REINFORCING NOT CALLED OUT ON PLAN.  
3. • - INDICATES SINGLE PILE, SEE GENERAL NOTES. SEE SECTIONS AND DETAILS FOR TOP OF PILE ELEVATIONS.  
4. ○ - INDICATES 4 PILE CAP TYPE 4A, TOP OF CAP AT EL. 98'-0". SEE DETAILS FOR PILE CAP REINFORCING AND SIZE.  
5. "GB1" - INDICATES GRADE BEAM #1, SEE SCHEDULE ON S601.  
6. "SB1" - INDICATES STRAP BEAM #1, SEE SCHEDULE ON S601.  
7. ☒ ☒ - INDICATES FLOOR PENETRATIONS FOR HVAC, PLUMBING, ELECTRICAL, ETC. COORDINATE LOCATIONS WITH RESPECTIVE CONSULTANT. PENETRATIONS TO BE CAST WITH SLAB. DO NOT CORE-DRILL OR SAW-CUT PENETRATIONS AFTER THE FLOOR IS CAST.  
8. ▤ - INDICATES AREA TO BE DEPRESSED. COORDINATE EXTENTS AND DEPTH OF ALL DEPRESSIONS WITH ARCHITECTURAL. ALL DEPRESSIONS SHALL BE VERIFIED WITH THE ARCHITECT BEFORE FORMING FOR THE CONCRETE POUR BEGINS.  
9. GBE - INDICATES TOP OF GRADE BEAM ELEVATION.

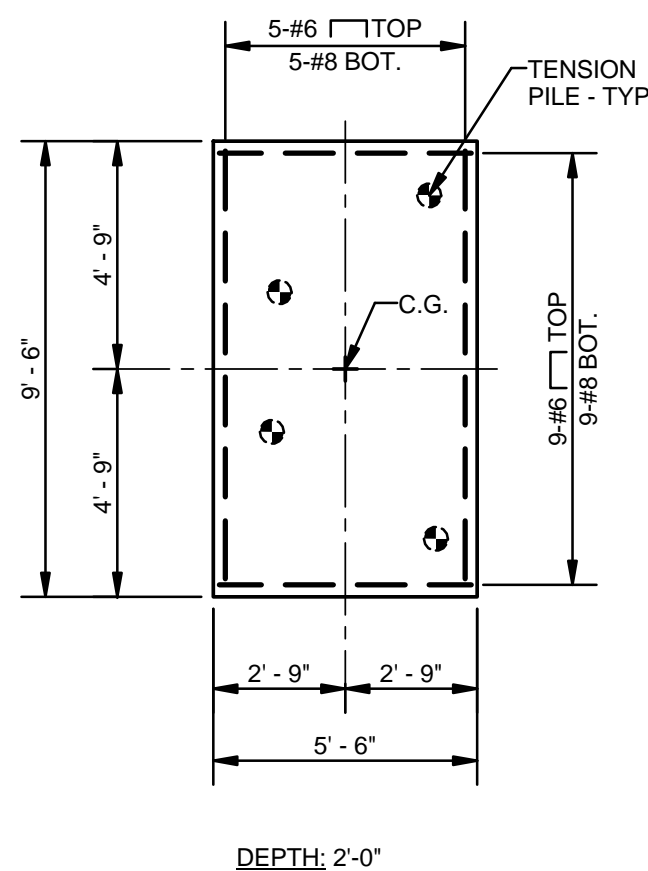
FOUNDATION AND FIRST  
FLOOR FRAMING PLAN  
S101 1/8" = 1'-0"



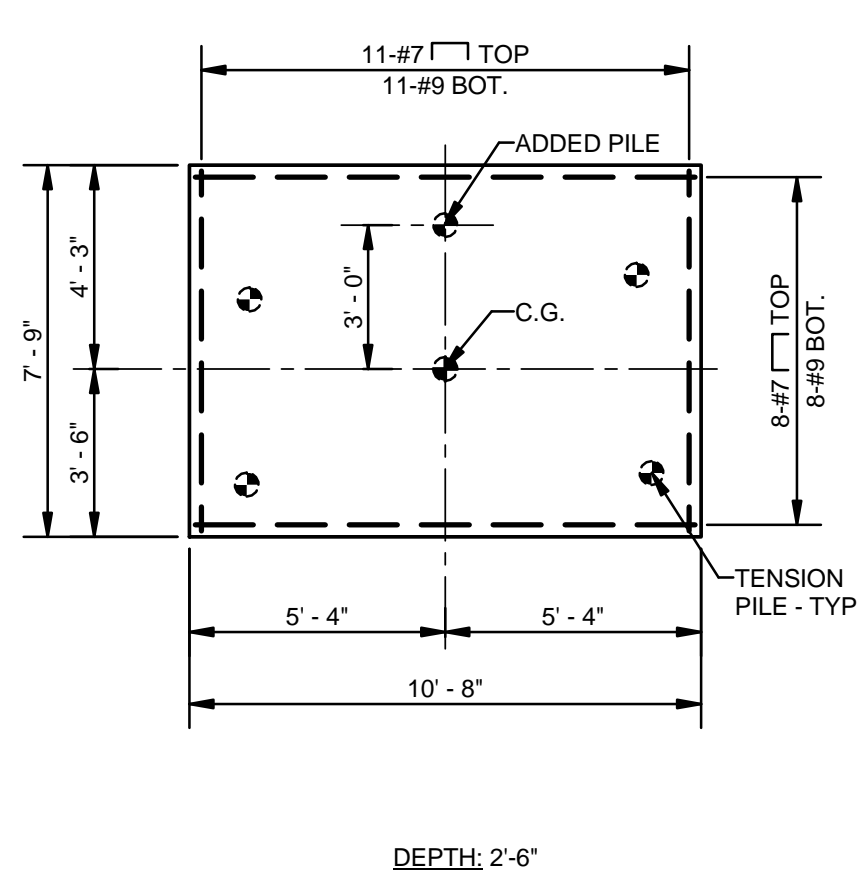
4 DETAIL-5 PILE CAP (5PB) AT G-4  
S101 1/4" = 1'-0"



5 DETAIL-4 PILE CAP (4PC) AT G-6  
S101 1/4" = 1'-0"



6 DETAIL-4 PILE CAP (6PB) AT F-9  
S101 1/4" = 1'-0"



7 DETAIL-4 PILE CAP (6PC) AT G-9  
S101 1/4" = 1'-0"

